

# Balby



**Specialist Residential  
Care in Doncaster**

# Welcome to Balby



Balby is a welcoming residential home in Doncaster where people are supported to build meaningful routines, and feel a true sense of belonging every day. ☆

Set in the heart of Balby in Doncaster, this spacious eight-bedroom home offers a calm, friendly environment where people with learning disabilities, autism and mental health needs can feel settled, valued, and supported to grow.

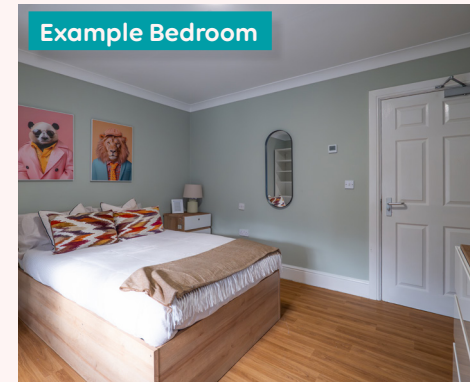
Spread across two floors, the home features a large shared lounge, a homely kitchen and dining space, and a dedicated games room where shared moments bring people together. Outside, a generous garden creates space for fresh air, relaxation, and outdoor activities.

Support is shaped around each person, with a focus on building independence, confidence and emotional wellbeing.

Guided by our Strive model of care, the team delivers consistent, compassionate support that helps people develop skills, explore interests and enjoy meaningful routines.

With 24-hour support and a highly trained team, Balby is a place where people are understood and supported to flourish at their own pace.

## Take a look around:



Example Bedroom



Living Room



Dining Room



Games Room

## This is ideal for...

- Adults with learning disabilities, autism and mental health needs.
- Benefits from 24-hour support in a calm, stable environment.
- Enjoys shared spaces while valuing quieter, personal time.
- Wants to build independence, confidence and daily living skills.
- Thrives with structured, compassionate and consistent support.

## Games, Laughter, Connection

A **dedicated games room** brings people together for fun, friendships and shared moments, creating a **lively space to relax**, unwind and enjoy everyday life.



## Location, location, location

Key things about the local area:

- Located in Balby, a well-connected Doncaster community.
- Close to local parks and green spaces, ideal for walks, relaxation and outdoor activities.
- Near GPs, dentists and essential services supporting independence.
- Easy access to local shops, cafes, leisure facilities, restaurants and community opportunities.
- Good public transport links, including nearby bus routes and the train station for wider travel.

44 Samuel Street, Doncaster, South Yorkshire, DN4 9AF



# Supporting people to flourish in a place they call home

At ivolve, we do more than meet people's needs - we help them thrive. That's why we created Strive: our unique model of support, designed to help people to live safer, fuller lives.

At Balby, Strive drives how we do things, turning good care into great lives.

It's the ivolve way - proactive, positive and co-produced for great outcomes.

**Strive Foundations:**

-  Active Support
-  Health & Wellbeing
-  Total Communication
-  Capable Environments
-  Trauma-Informed Practice

 Scan QR to watch our Strive video!



## Your journey to ivolve:



"The team understands each person, creating a supportive home where confidence grows."



**Want to know more?  
Let's talk.**

Scan the QR code to make a referral or visit **ivolve.care**

✉ [referrals@ivolve.care](mailto:referrals@ivolve.care)

☎ 01246 556453